

O narrow 9mm, 10.5mm

Aeroco ATLAS-mini

#1281
#1291

Jun 25, 2023 V1.0



#1281••9mm gauge #1291••10.5mm
gauge

Thank you for your purchase. Please read this manual carefully before assembling. Please feel free to email us with any questions. *This product is made using 3D stereolithography.
<https://tomamw.com/instructions/1281.pdf>

Toma Model Works 541-3 Nishimachi, Soka City,
Saitama 340-0035 Email: izm00625@nifty.ne.jp
Web site: <http://www.tomamw.com>

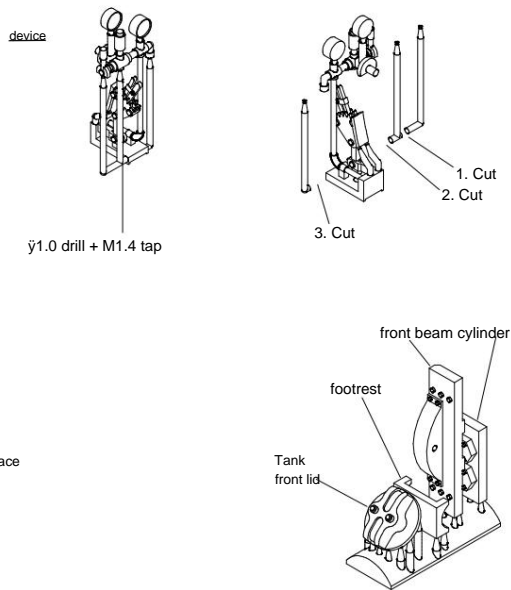
Copyright (C) 2023 Toma Model Works. All Rights Reserved.

Parts list - Assembled power unit

x1 - Air tank x1 - Underframe x1,
equipment x1,
chair x1, logo stencil board x1, cylinder front cover, front beam, foot
rest, tank cover set x1 - Screws M1.4xL2x1, M1 .4xL4x2

Precautions and preparation for assembly (thread cutting and filing).

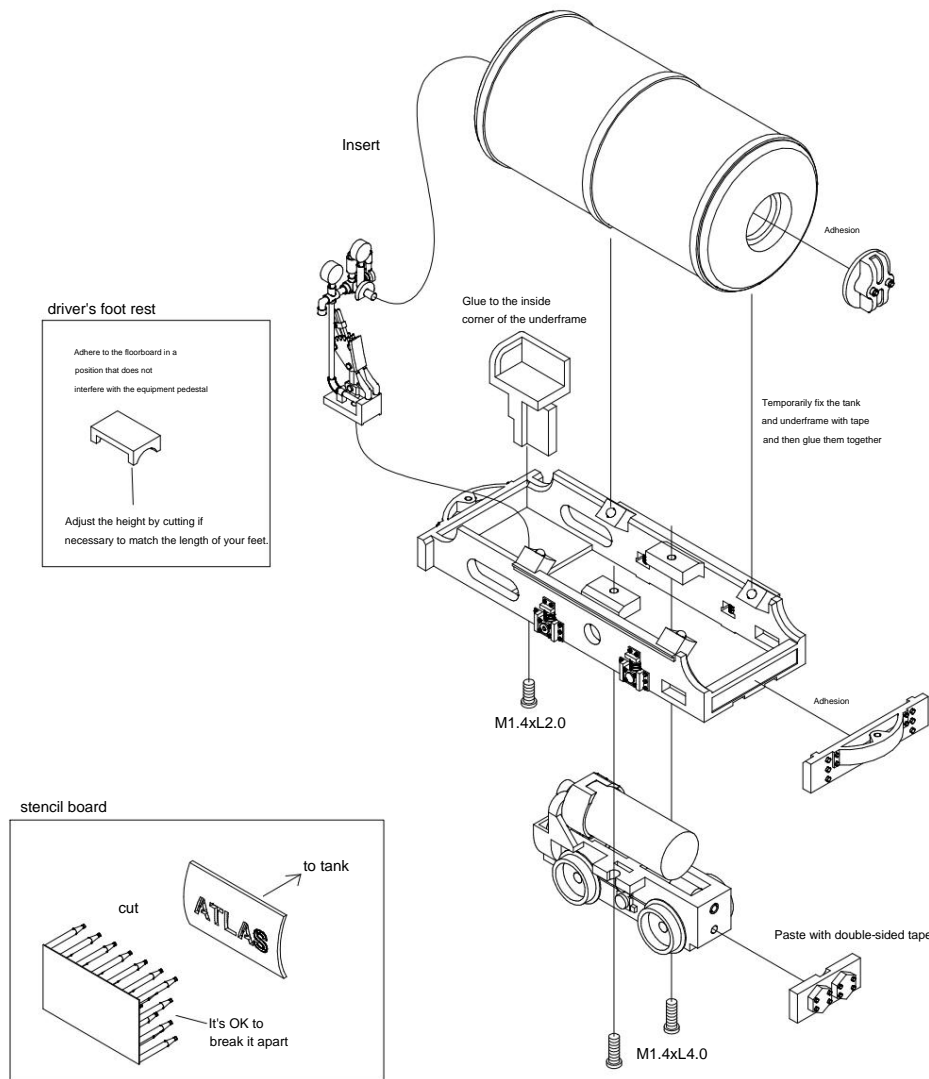
- Pass a 1.0mm drill through the three holes on the underframe and the device, then cut the screws with an M1.4 tap. Enlarge the coupler pin holes on the front and rear beams to the desired hole diameter. - Sand the front end of the underframe to make it flat.*Finish the lamination marks on the tank, front and rear beams of the underframe, etc. with a file. It is best to file the tank roughly along the roundness with a flat file and then finish with a sponge file. In these cases, lightly moisten with water to prevent shavings from flying around. If there are any other burrs or areas of concern, finish the surface with paper. Rinse off any powder adhering to the car body with running water, absorb the water droplets with a tissue, and let it air dry. -For the equipment, cut out the three supports at the positions shown in the order shown in the diagram. You can leave it on until the final assembly. *If you accidentally drill a screw hole, you may be able to tighten the screw by filling it with epoxy adhesive, drilling a pilot hole with a ϕ 1.0 drill, and cutting the tap again.



Painting - Can be painted normally using a regular plastic surfacer and plastic paint.

Assembly -

You can use your favorite adhesive such as Instant, epoxy, or Super X rubber. Since it is made of plastic material, be careful not to overtighten the screws. - For the driver, Doraku Bozu's "O Narrow Industrial Locomotive Driver Doll Front View" is suitable. We recommend temporarily fixing it with a sticky adhesive and gluing each part while checking for interference with other parts such as equipment. Since the legs are too short to reach the floorboard, glue the footrest to an appropriate position between the chair and the equipment base.*Glue a weight made of lead plates to the inside of the tank so that the front and rear balance matches the driver. First, temporarily secure the weights with double-sided tape and make sure that they do not interfere with the power unit.*As a bonus, you can letter the manufacturer's name on the stencil board. Attach it to the tank with masking tape, mask the surrounding area, and spray paint on it.



(end)